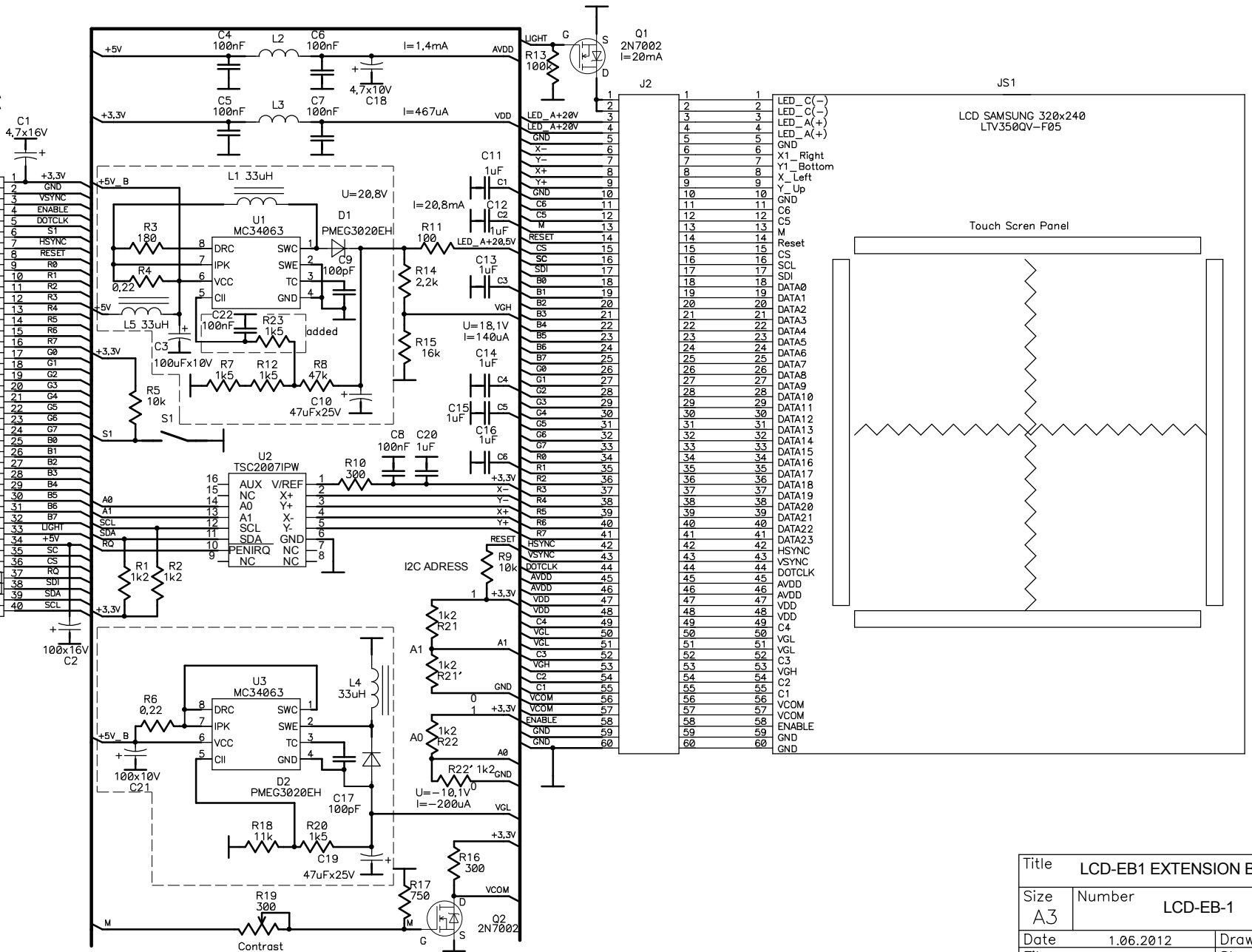


Interface connector to LPC4350-DB1 (J6) A or LPC1850-DB1 (J6) A development board.

J1 SOCKET_40PINS

3.3V	1	+3.3V
GND	2	GND
LCDPFP	3	VSYNC
ENABLE	4	ENABLE
LCCDCLK	5	DOTCLK
LCLE	6	S1
LCDLP	7	HSYNC
LCDPWR/GPIO3[15]	8	RESET
LCDVD0	9	R0
LCDVD1	10	R1
LCDVD2	11	R2
LCDVD3	12	R3
LCDVD4	13	R4
LCDVD5	14	R5
LCDVD6	15	R6
LCDVD7	16	R7
LCDVD8	17	G0
LCDVD9	18	G1
LCDVD10	19	G2
LCDVD11	20	G3
LCDVD12	21	G4
LCDVD13	22	G5
LCDVD14	23	G6
LCDVD15	24	G7
LCDVD16	25	B0
LCDVD17	26	B1
LCDVD18	27	B2
LCDVD19	28	B3
LCDVD20	29	B4
LCDVD21	30	B5
LCDVD22	31	B6
LCDVD23	32	B7
LCDVD23	33	G5
GPI05[18]/MCOA1	34	+5V
5V	35	SC
SSP0_SCK	36	CS
SSP0_SS[GPIO0[6]	37	RO
SSP0_MISO/GPIO5[10]	38	SDI
SSP0_MOSI/GPIO5[11]	39	SDA
I2C1SDA	40	SDA
I2C1SCL	40	SCL



Title LCD-EB1 EXTENSION BOARD			
Size A3	Number LCD-EB-1	Rev A	
Date 1.06.2012	Drawn by		
Filename lcd-eb1.pdf	Sheet 1 of 1		